

## Tissue Grinding Machine

### Introduction:

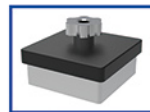
BHY1 is an efficient laboratory sample preparation instrument. DNA, RNA and protein from high-throughput samples (soil, animal and plant tissues, microorganisms, etc.) can be extracted and purified, greatly improving grinding efficiency and quality.

### Application:

Widely used in biomedicine, animal and plant tissues, food safety, agriculture, environment, forensic medicine, plastics, polymers and so on.

### Features:

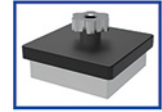
- \* 5 inch touch screen, easy to operate.
- \* It can be used as a single machine to observe the running state of the instrument in real time through the display screen.
- \* Support any customized grinding jars of various specifications.
- \* Independent centrifuge tubes and disposable grinding beads avoid cross-contamination of samples and external contamination.
- \* Equipped with door lock sensor, stop immediately after opening the cover.
- \* Butterfly button lock, anti-fall.
- \* Innovative shock-proof principle, three-dimensional integrated operation mode, innovative grinding bead operation mode.



16well 5ml



24well 2ml



32well 2ml

### Technical Parameters:

Model	BHY1
Max. Speed	2500r/min
Grinding Jar	Standard: 24well 2ml Optional: 32well 2ml, 16well 5ml, customized.
Grinding Way	Vertical oscillation, dry grinding, wet grinding
Number Of Grinding Platforms	>2
Grinding Speed	Up to 32 samples (2ml) can be processed in 1 minute.
Grinding Time	0~99min, adjustable
Programming	Multi-stage operation setup is available (loop mode can be set)
Power Supply	Standard: 220V 50/60Hz Optional: 110V 50/60Hz
External Size	265*405*475mm
Package Size	510*375*640mm
Net/Gross Weight	28.5/41kg